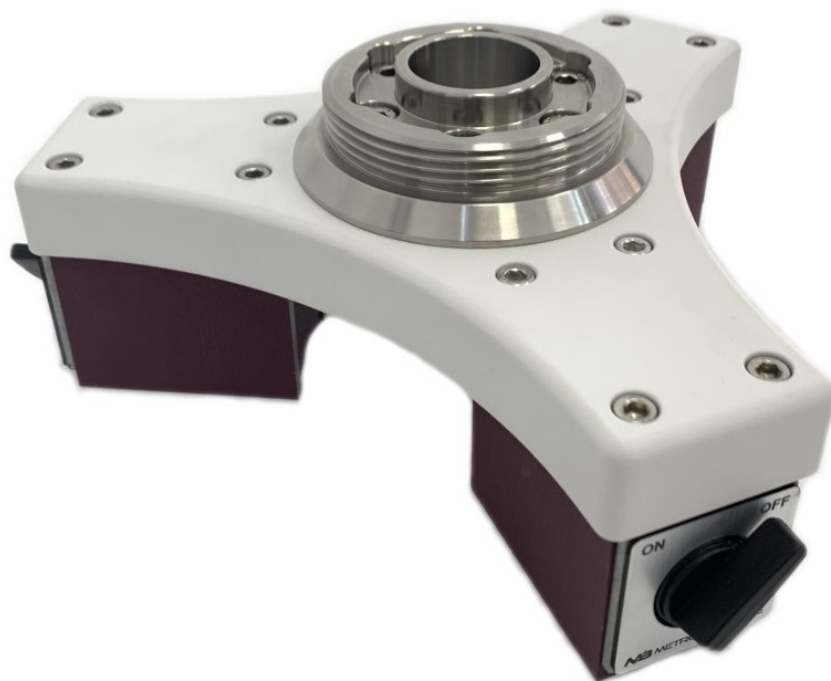


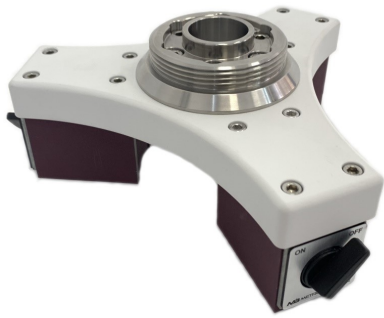
MAGNETIC BASES

METROLOGYBASE offers Magnetic Bases on flat or curved surfaces for Portable CMMs

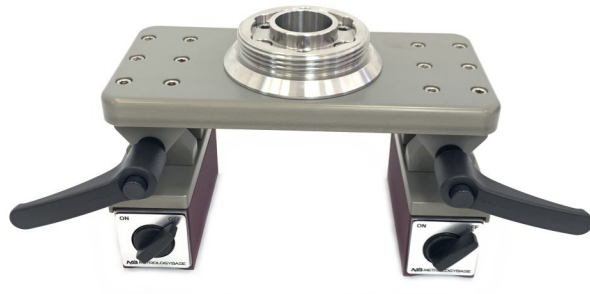


SELECT YOUR MAGNETIC BASE

Using METROLOGYBASE Magnetic Bases improve your flexibility at measurement area. METROLOGYBASE has designed these Magnetic Bases for functionality, portability and repeatable measurement of CMMs. Magnetic Bases are available in four standard configurations.



Flat Surfaces



Curved Surfaces



Adapter 1



Adapter 2

MAGNETIC BASE 1

- Magnetic Base 1 can be used on flat and magnetic surfaces.
- 3-point contact.
- Locks with three magnets.

MAGNETIC BASE 2

- Magnetic Base 2 can be used on curved and magnetic surfaces.
- Adjustable magnetic base mount design.
- 2-point contact.
- Locks with two magnets.

FEATURES

METROLOGYBASE Magnetic Bases have been designed for Portable CMMs and Laser Trackers. Magnetic Bases are ideal where you want to make measurements on magnetic surfaces.

- Rigid and rugged construction
- Perfect planarity base
- Ideal for indoor use

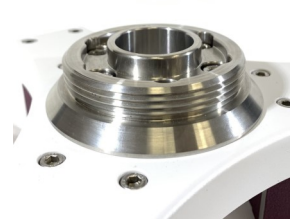
Construction

All parts are 100% CNC MACHINED from solid block materials (No casting). Made from high strength 6061 T6 series aircraft grade aluminum and corrosion resistant stainless steel.



Adapter

Magnetic Bases can be used with any product having an internal 3½"-8 thread.



Planarity

METROLOGYBASE Magnetic Bases have perfect planarity. Magnets' bottom surface have been machined after assembly.



Easy Setup

Magnetic Bases can be mounted on any magnetic surface easily with on/off switches.



Flat or Curved

Magnetic Base 1 is for flat surfaces. Magnetic Base 2 is for curved surfaces. You can select your best fit product according to the mounting magnetic surface.



Adapter 1 or 2

Adapters are available in 2 versions. 1* has high inner ring that help centering the metrology instrument when mounting. 2 does not have inner centering ring. *Some metrology instruments



TECH SPECS

Product Number	Flat/Curved	Adapter	Magnet Force	Weight	Ring
MB-MB-01-A1	Flat	1	980 N x 3	6.4 Kg	3½"-8 Thread
MB-MB-01-A2	Flat	2	980 N x 3	6.36 Kg	3½"-8 Thread
MB-MB-02-A1	Curved	1	1470 N x 2	10.15 Kg	3½"-8 Thread
MB-MB-02-A2	Curved	2	1470 N x 2	10.11 Kg	3½"-8 Thread